

smartfix Captive Facade



smartfix®

THE FUTURE OF FACADE FIXING TECHNOLOGY

Powered by **CAPRAL**
ALUMINIUM

3mm Facade Plate: By smartfix Facade Systems

Sydney - Australia
Factory 9A - 9 Davis Road,
Wetherill Park NSW 2164

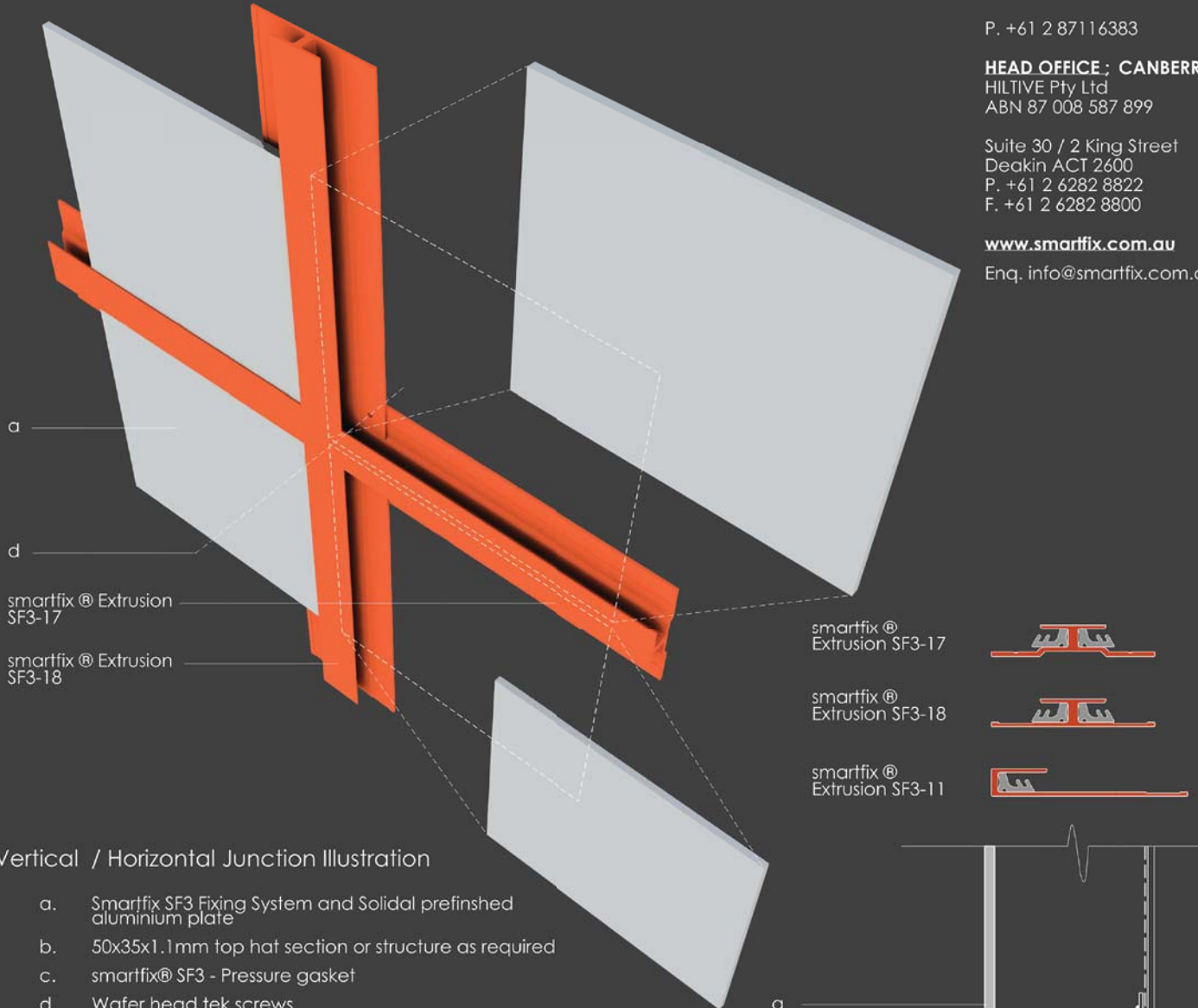
P. +61 2 87116383

HEAD OFFICE : CANBERRA
HILTIVE Pty Ltd
ABN 87 008 587 899

Suite 30 / 2 King Street
Deakin ACT 2600
P. +61 2 6282 8822
F. +61 2 6282 8800

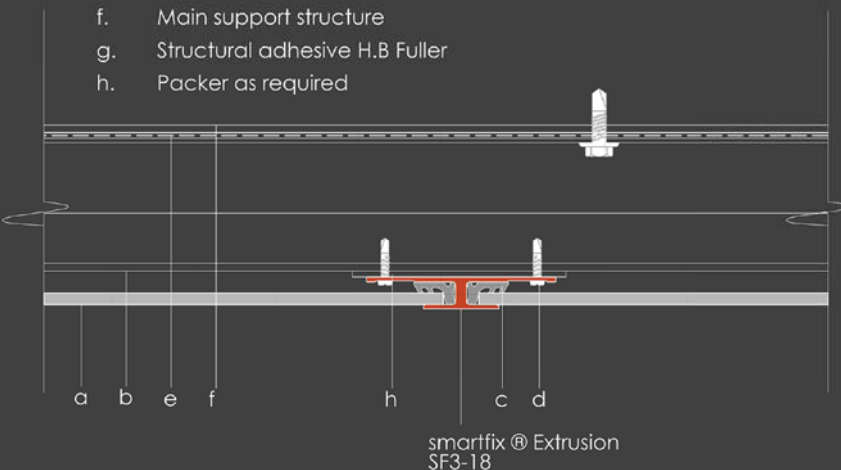
www.smartfix.com.au

Enq. info@smartfix.com.au

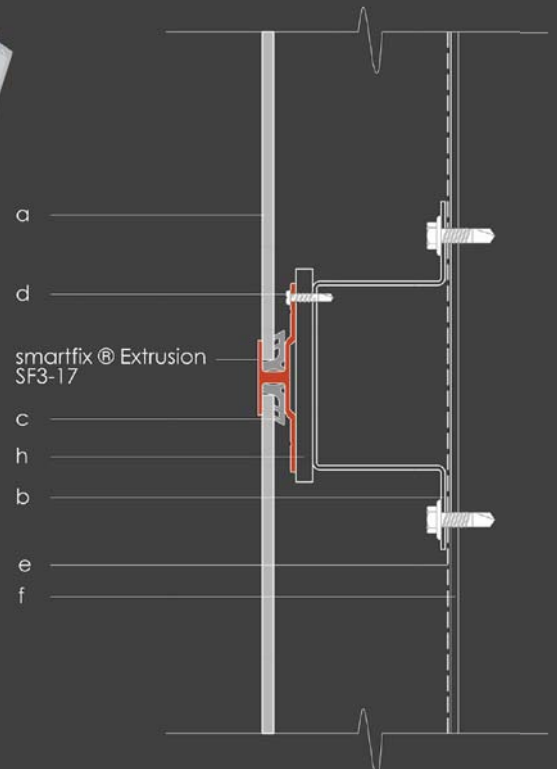


Vertical / Horizontal Junction Illustration

- a. Smartfix SF3 Fixing System and Solidal prefinished aluminium plate
- b. 50x35x1.1mm top hat section or structure as required
- c. smartfix® SF3 - Pressure gasket
- d. Wafer head tek screws
- e. Firefly non combustibile sarking between top hat and support structure
- f. Main support structure
- g. Structural adhesive H.B Fuller
- h. Packer as required



Vertical Panel Joint Detail

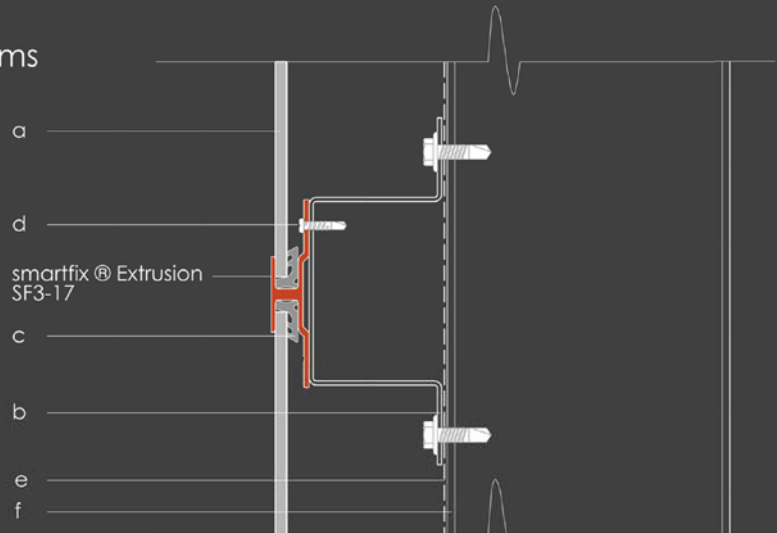


Horizontal Panel Joint Detail

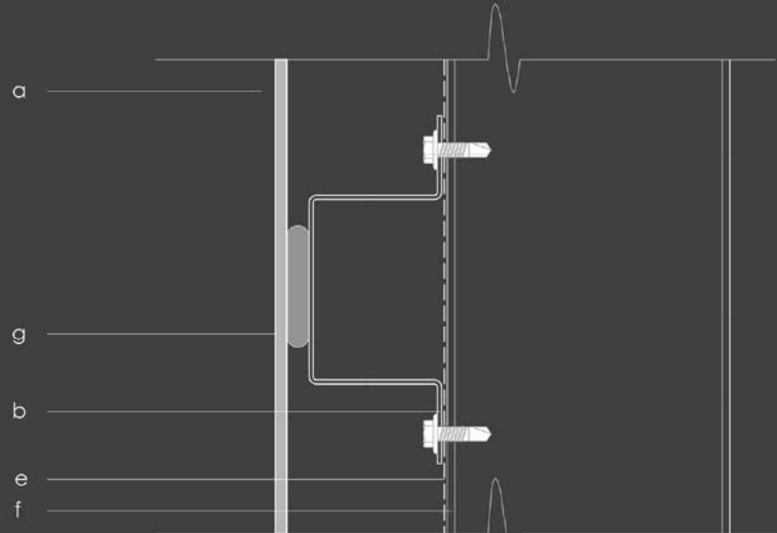
smartfix Captive Facade

3mm Facade Plate: By smartfix Facade Systems
100% Australian designed and engineered

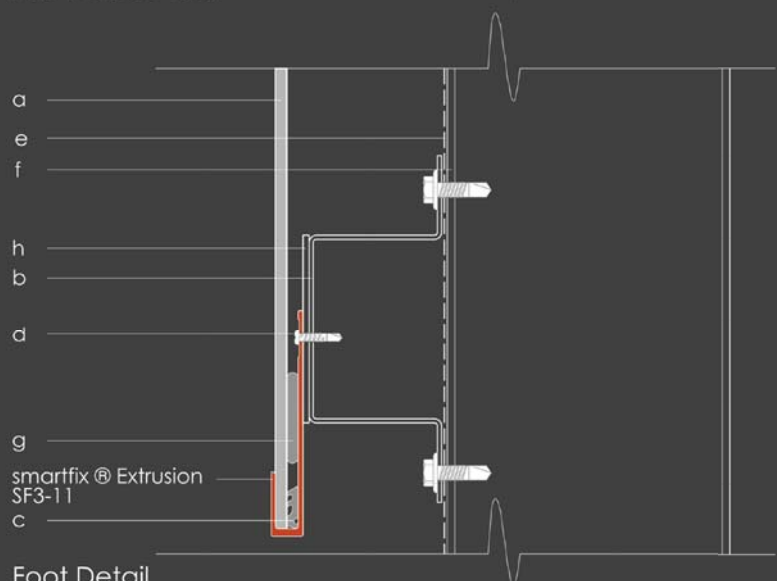
- A value engineered facade solution
- Fast to install and minimises workshop and site installation time
- No exposed face sealant
- No edge slot required to aluminum plate
- All edges capture and are mechanically fixed
- Concealed pressure seal gasket used at all vertical and horizontal joint connections
- Adaptable with CAPRAL commercial window systems
- AAF Evershield Coastal Anodise finish with 30 years warranty
- Available with SOLIDAL range of quality PVDF finishes
- Technical support and enquiries
smartfix: info@smartfix.com.au
CAPRAL: www.capral.com.au



Horizontal Panel Joint Detail



Mid Panel Detail



Foot Detail



Powered by **CAPRAL**
ALUMINIUM

www.smartfix.com.au
Enq. info@smartfix.com.au