



ags™

COMMERCIAL
425 NARROWLINE
DOUBLE GLAZED (101.6MM)

CAPRAL
ALUMINIUM



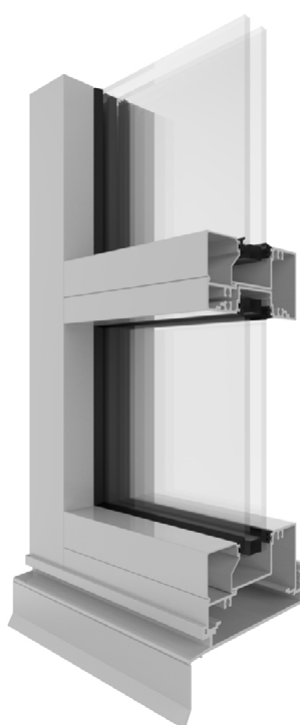
AGS 425 NARROWLINE DOUBLE GLAZED (101.6mm)

The AGS 425 Narrowline framing system has been developed specifically to meet the growing requirement for energy efficient double glazing. Modeled on the AGS 400 Narrowline framing system, the 425 Narrowline integrates seamlessly to allow design flexibility between single and double-glazed systems.

With a wide range of compatible doors and operable windows, the AGS 425 Narrowline offers generous design flexibility making this product ideal for commercial or residential projects that require a bold modern look and high levels of structural and thermal performance.

FEATURES AND BENEFITS

- Dedicated double glazed 101.6mm x 50mm centre glazed frame
- Suits most commercial or architectural applications requiring improved thermal characteristics
- Captive glazing wedge options for easier on-site glazing
- Supports various glass thicknesses with the use of an adaptor
- Sub-frame options
- Compatible door and window suites available
- Internal and externally beaded options
- Dedicated corner posts
- Tested for BAL 40 compliance



Capral's AGS range is extruded in Australia using LocAl® Green primary aluminium.

- Significantly lower carbon emissions than global averages for primary aluminium
- 8kg CO₂e/kg Al
- ASI Certified Smelter



1800 ALUMINIUM (258 646)
capral.com.au
Capral Limited ABN 78 004 213 692
August 2024

MAXIMUM PERFORMANCE

| | |
|-------------------------|--------|
| Serviceability Pressure | 4500Pa |
| Ultimate Pressure | 9700Pa |
| Water Penetration | 1500Pa |

FRAME DIMENSIONS

| | |
|--------|---------|
| Depth | 101.6mm |
| Height | 50mm |

MAXIMUM RECOMMENDED SIZE

| | |
|--------|--------|
| Height | 4000mm |
| Width | 2400mm |

GLAZING CAPACITY

| | |
|-------------------------|---------|
| Single Glazed (Adaptor) | 4-10mm |
| Thick Glass (Adaptor) | 10-16mm |
| Double Glazed | 18-29mm |

ACOUSTIC RATING

| | |
|-----------------|------------|
| Acoustics (Max) | 41 (-2;-6) |
|-----------------|------------|

WINDOW ENERGY RATINGS

| Window ID | Glazing | Uw | SHGC | Tw | Air Inf |
|-------------|---------------------------|-----|------|------|---------|
| CAP-063-001 | 6Clr/12/6Clr | 3.5 | 0.64 | 0.71 | 0.04 |
| CAP-063-008 | 6EcAEG/12/6Clr | 2.9 | 0.27 | 0.39 | 0.04 |
| CAP-063-018 | 6Clr/12/6EA | 2.8 | 0.61 | 0.65 | 0.04 |
| CAP-063-031 | 638CPNt/12/6EA | 2.7 | 0.38 | 0.44 | 0.04 |
| CAP-063-052 | 6Clr/12Ar/6EA | 2.6 | 0.61 | 0.65 | 0.04 |
| CAP-063-075 | 6.38CPClr/12Ar/6Clr | 2.6 | 0.55 | 0.66 | 0.04 |
| CAP-063-104 | 6SolEGy/12Ar/6Clr | 2.6 | 0.26 | 0.24 | 0.04 |
| CAP-063-129 | AGG PRIME Clr 6/12/6 | 2.6 | 0.49 | 0.61 | 0.04 |
| CAP-063-139 | AGG PLUS Clr 6/12/6 | 2.4 | 0.53 | 0.71 | 0.04 |
| CAP-063-147 | AGG MAX Clr 6/12/6 | 2.3 | 0.25 | 0.58 | 0.04 |
| CAP-063-148 | AGG MAX LI 6/12/6 | 2.3 | 0.25 | 0.59 | 0.04 |
| CAP-063-149 | AGG MAX Gy 6/12/6 | 2.3 | 0.21 | 0.29 | 0.04 |
| CAP-063-150 | AGG MAX Clr lam 6/12/6.38 | 2.3 | 0.25 | 0.58 | 0.04 |

View full list of Residential and Commercial WERS rating at capral.com.au