



futureline®

THERMAL ARCHITECTURAL
WINDOWS AND DOORS

CAPRAL
ALUMINIUM





Futureline Thermal Architectural

Capral's Futureline range of thermally broken windows, doors and framing systems is designed to improve the thermal performance of buildings throughout Australia whilst delivering high performance and contemporary architectural style. Futureline provides an energy efficient option for commercial, high-end residential and architectural applications.

Capral's Futureline system incorporates an innovative thermal break that minimises heat transfer through the aluminium frame.

The Futureline suite is a versatile solution providing a uniform architectural aesthetic and exceptional performance outcomes.

The environmental credentials of the Futureline range extend beyond its excellent thermal design performance; all Futureline window and door systems are extruded from Capral's LocAl lower-carbon aluminium which is significantly lower in carbon emissions than traditional aluminium and carry the ASI Performance standard certification.



WHAT IS A THERMAL BREAK?

Aluminium has many advantages such as strength, durability and corrosion resistance but it is a conductor of heat and cold.

The inclusion of a thermal break in an aluminium window or door frame creates a barrier to block the transfer of heat and cold, from entering or leaving the building.

WHY CHOOSE FUTURELINE?

Futureline Architectural window and door products incorporate a thermal break barrier between the internal and external sections of the aluminium frame.

The benefits of a thermal break in high performance windows and doors:

1. Lowers cooling energy costs by reducing temperature gains.
2. Lowers heating energy costs by reducing temperature losses.
3. Reduces the likelihood of condensation.
4. Can be an effective barrier for sound absorption in conjunction with double glazing.

The efficiency of the thermal break.

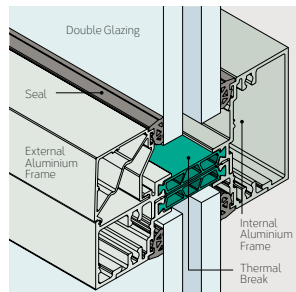
The diagrams below help illustrate how a thermal break works in an aluminium product and the impact it has on the temperatures inside a building.

These models demonstrate the thermal transfer through a standard aluminium product (centre diagram) versus an aluminium product with a thermal barrier (right diagram) in a winter scenario. The colour legend references the temperatures associated with each colour.

Manufactured with lower-carbon emission aluminium.

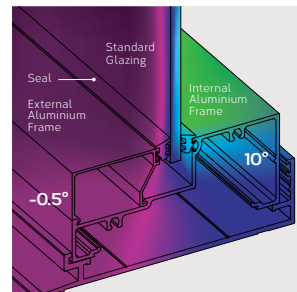
Futureline is made in Australia using LocAl® Green primary aluminium.

- Significantly lower carbon emissions than global averages for primary aluminium
- 8kg CO₂e/kg Al
- ASI Certified



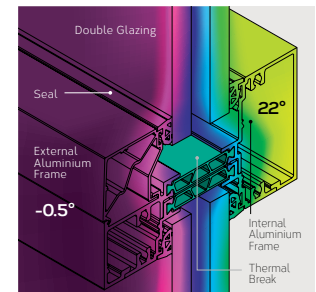
Thermal Break (Cross Section)

The green section above is the thermal break acting as a barrier between the two aluminium sections of the window. With no contact between the aluminium frames, thermal and sound conductivity is reduced.



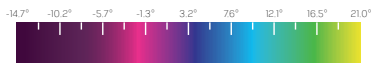
Standard Aluminium Product

This model shows a standard aluminium window with an external temperature of -0.5°C, which is transferring internally to a temperature of approximately 10°C.



Aluminium Product with Thermal Break

In contrast, this model shows an aluminium product with an external temperature of -0.5°C. The barrier reduces the transfer so that the internal temperature remains at a warmer 22°C.





FUTURELINE 994TB SLIDING DOOR



The Futureline 994TB Sliding Door is a premium option for convenience, comfort, and efficiency. It has clean lines and a bold look that benefits from the thermal break technology below the surface.

The thermally broken frame delivers fantastic performance year-round and offers a thermally efficient solution which meets the stringent energy provisions of the National Construction Code. Designed to deliver wide openings, the Futureline 994TB Sliding Door can be used to create an impressive connection to the great outdoors.

This sliding door is compatible with the mortice and surface-mounted locks and handles in Capral's Caprio and Caprice hardware ranges and has a variety of standard and powered roller options.

FEATURES AND BENEFITS

- Compatible with Futureline 429TB and 629TB framing
- Configurable with linear grate drain
- Optional Volta Power Assist Rollers
- Compatible with Caprio and Caprice mortice and surface-mounted hardware
- Available with highlight and sidelight options
- Range of 2 and 3 -track configurations

MAXIMUM PERFORMANCE

Serviceability Pressure	4500Pa
Ultimate Pressure	5500Pa
Water Penetration	450Pa

FRAME DIMENSIONS

	Depth	Height
Standard Sill	100mm	44mm
High Performance Sill	150mm	44mm

MAXIMUM RECOMMENDED SIZE

Panel Height	3000mm
Panel Width	2200mm
Panel Weight	300kg

ACOUSTIC RATING

Acoustics (Max)	37 (-1;-3)
-----------------	------------

WINDOW ENERGY RATINGS

Window ID	Glazing	Uw	SHGC	Tw	Air Inf
CAP-542-001	6 LB Clr/12/6	2.5	0.37	0.51	0.09
CAP-542-002	6 LB Gry/12/6	2.5	0.23	0.24	0.09
CAP-542-003	6 Entech/12 Ar/6	2.7	0.42	0.48	0.09
CAP-542-004	6Clr/12/6Clr	3.3	0.48	0.51	0.09
CAP-542-005	6Clr/12Ar/6Clr	3.2	0.48	0.51	0.09
CAP-542-006	6Gry/12/6Clr	3.3	0.31	0.24	0.09

View full list of Residential WERS ratings at capral.com.au

FUTURELINE HORIZONTAL SASHLESS WINDOW

The Futureline Horizontal Sashless Window is a sleek and modern take on the traditional sliding window. As the name suggests, the panes are sashless, providing the clearest possible view.

The Futureline Horizontal Sashless Window is a high quality thermally broken sashless system. Available in multiple configurations using 2 or 3 panels to suit your opening and compatible with Futureline's Framing Systems, it offers total design flexibility.

FEATURES AND BENEFITS

- Excellent 'Uw' values down to 2.2
- 100mm window restrictors available to prevent falls
- Compatible with the complete range of Futureline Framing systems
- Screens available
- Can be configured to suit a range of applications, including fixed panels
- Slide-Fixed (XO), Slide-Fixed-Slide (XOX) and Fixed-Slide (OX) configurations available
- Available in 100mm and 150mm frames



MAXIMUM PERFORMANCE

Ultimate Pressure	2000Pa
Water Penetration	300Pa

INSERT SIZE

Frame	34 - 56mm
Interlock	19mm

MAX. RECOMMENDED INSERT SIZE

Insert Height	1607mm
Insert Width	5000mm
Panel Weight	60kg

GLAZING CAPACITY

Double Glazed	22mm
---------------	------

WERS WINDOW ENERGY RATINGS

Window ID Glazing Uw SHGC Tw Air Inf

Futureline Horizontal Slider in 425TB

CAP-525-002	6.38CPClR/12/4ClR	2.9	0.44	0.52	0.60
CAP-525-015	AGG LowE Plus 6/12/4	2.6	0.42	0.55	0.60
CAP-525-018	AGG LowE Max 6/12/4	2.6	0.20	0.46	0.60

Futureline Horizontal Slider in 619TB 100mm

CAP-523-002	6.38CPClR/12/4ClR	2.6	0.47	0.57	0.60
CAP-523-015	AGG LowE Plus 6/12/4	2.3	0.45	0.60	0.60
CAP-523-018	AGG LowE Max 6/12/4	2.2	0.22	0.49	0.60

Futureline Horizontal Slider in 6219TB 150mm

CAP-524-002	6.38CPClR/12/4ClR	2.8	0.44	0.52	0.60
CAP-524-015	AGG LowE Plus 6/12/4	2.5	0.42	0.55	0.60
CAP-524-018	AGG LowE Max 6/12/4	2.4	0.20	0.45	0.60

View full list of Residential and Commercial WERs ratings at capral.com.au





FUTURELINE VERTICAL SASHLESS WINDOW



The Futureline Vertical Sashless Window is a sleek and modern take on the traditional double hung window. As the name suggests, the panes are sashless, allowing an almost uninterrupted view.

The Futureline Vertical Sashless Window is a high quality thermally broken sashless system. Available in a range of configurations and compatible with Futureline's Framing Systems, it offers design flexibility.

FEATURES AND BENEFITS

- Excellent 'Uw' values down to 2.0
- 100mm window restrictors available to prevent falls
- Compatible with the complete range of Futureline Framing systems
- Counterbalance sashless panes
- Screens available
- Available in 100mm and 150mm frames
- Bushfire compliance

MAXIMUM PERFORMANCE

Serviceability Pressure	1200Pa
Ultimate Pressure	3000Pa
Water Penetration	300Pa

INSERT SIZE

Frame	33 - 38mm
Meeting Rail	19mm

MAX. RECOMMENDED INSERT SIZE

Insert Height	4000mm
Insert Width	1598mm
Panel Weight	40kg

GLAZING CAPACITY

Double Glazed	22mm
---------------	------

BUSHFIRE RATING

BAL	40
-----	----

WERS WINDOW ENERGY RATINGS

Window ID Glazing Uw SHGC Tw Air Inf

Futureline Vertical Slider in 425TB

CAP-522-002	6.38CPClr/12/4Clr	2.4	0.48	0.58	0.60
CAP-522-015	AGG LowE Plus 6/12/4	2.1	0.47	0.62	0.60
CAP-522-018	AGG LowE Max 6/12/4	2.0	0.22	0.51	0.60

Futureline Vertical Slider in 429TB 100mm

CAP-520-002	6.38CPClr/12/4Clr	2.6	0.45	0.54	0.60
CAP-520-015	AGG LowE Plus 6/12/4	2.3	0.43	0.57	0.60
CAP-520-018	AGG LowE Max 6/12/4	2.3	0.21	0.47	0.60

Futureline Vertical Slider in 629TB 150mm

CAP-521-002	6.38CPClr/12/4Clr	2.7	0.45	0.54	0.60
CAP-521-015	AGG LowE Plus 6/12/4	2.4	0.44	0.57	0.60
CAP-521-018	AGG LowE Max 6/12/4	2.3	0.21	0.47	0.60

View full list of Residential and Commercial WERs ratings at capral.com.au

FUTURELINE AWNING WINDOW



Designed to complement the excellent thermal performance of the Futureline framing system, the Futureline Awning window offers a stylish and functional operable window. The 54mm sash profile incorporates a pair of high performance polyamide strips to efficiently minimise heat and cold transfer, while internal and external weather seals combined with an overlapping frame design offer a high level of weather-tightness.

The Futureline Awning window features the option of fully integrated screening and the flexibility of either sash handles or sash operator options. Robust sash construction and corner strength is assured with the use of high quality European corner clamping components.

FEATURES AND BENEFITS

- Excellent 'Uw' values down to 2.7
- 54mm heavy duty sash profile
- Double weather seals
- Capable of accommodating IGU's up to 40mm
- Mitred corner construction with high quality hardware
- Bushfire compliance

MAXIMUM PERFORMANCE

Serviceability Pressure	2200Pa
Ultimate Pressure	4500Pa
Water Penetration	1000Pa

FRAME SIZE

Sash Depth	54mm
Height	57mm

MAXIMUM RECOMMENDED SIZE

Sash Height	1800mm
Sash Width	1500mm
Total Area	1.8m ²
Sash Weight	60kg

GLAZING CAPACITY

Double Glazed	15mm - 40mm
---------------	-------------

ACOUSTICS (MAX)

Rw (C;Ctr)	38 (-1;-3)
------------	------------

BUSHFIRE RATING

BAL	40
-----	----

WERS WINDOW ENERGY RATINGS

Window ID Glazing Uw SHGC Tw Air Inf

Futureline Awning Window into 425TB*

CAP-116-001	6Clr/12/6Clr	3.5	0.45	0.48	0.24
CAP-116-004	6ET/12Ar/6Clr	2.9	0.39	0.44	0.24
CAP-116-037	AGG LowE Prime 6/12/6	2.9	0.35	0.41	0.24
CAP-116-047	AGG LowE Plus 6/12/6	2.7	0.37	0.48	0.24
CAP-116-055	AGG LowE Max 6/12/6	2.7	0.19	0.39	0.24

Futureline Awning Window into 429TB*

CAP-150-001	6Clr/12/6Clr	3.8	0.40	0.41	0.24
CAP-150-004	6ET/12Ar/6Clr	3.3	0.35	0.38	0.24
CAP-150-013	AGG LowE Prime 6/12/6	3.3	0.31	0.35	0.24
CAP-150-023	AGG LowE Plus 6/12/6	3.2	0.33	0.41	0.24
CAP-150-031	AGG LowE Max 6/12/6	3.1	0.17	0.33	0.24

View full list of Residential and Commercial WERs ratings at capral.com.au





FUTURELINE CASEMENT WINDOW

Designed to complement the excellent thermal performance of the Futureline framing system, the Futureline Casement window offers a stylish and functional operable window. The 54mm sash profile incorporates a pair of high performance polyamide strips to efficiently minimise heat and cold transfer, while internal and external weather seals combined with an overlapping frame design offer a high level of weather-tightness.

The Futureline Casement window features the option of fully integrated screening and the flexibility of either sash handles or sash operator options. Robust sash construction and corner strength is assured with the use of high quality European corner clamping components.

FEATURES AND BENEFITS

- Excellent 'Uw' values down to 2.7
- 54mm heavy duty sash profile
- Double weather seals
- Capable of accommodating IGU's up to 40mm
- Mitred corner construction with high quality hardware



MAXIMUM PERFORMANCE

Serviceability Pressure	2200Pa
Ultimate Pressure	4500Pa
Water Penetration	1000Pa

FRAME SIZE

Sash Depth	54mm
Height	57mm

MAXIMUM RECOMMENDED SIZE

Sash Height	1800mm
Sash Width	900mm
Total Area	1.8m ²
Sash Weight	40kg

GLAZING CAPACITY

Double Glazed	15mm - 40mm
---------------	-------------

ACOUSTICS (MAX)

Rw (C;Ctr)	38 (-1;-3)
------------	------------

WERS WINDOW ENERGY RATINGS

Window ID Glazing Uw SHGC Tw Air Inf

Futureline Casement Window into 425TB*

CAP-116-001	6Clr/12/6Clr	3.5	0.45	0.48	0.24
CAP-116-004	6ET/12Ar/6Clr	2.9	0.39	0.44	0.24
CAP-116-037	AGG LowE Prime 6/12/6	2.9	0.35	0.41	0.24
CAP-116-047	AGG LowE Plus 6/12/6	2.7	0.37	0.48	0.24
CAP-116-055	AGG LowE Max 6/12/6	2.7	0.19	0.39	0.24

Futureline Casement Window into 429TB*

CAP-150-001	6Clr/12/6Clr	3.8	0.40	0.41	0.24
CAP-150-004	6ET/12Ar/6Clr	3.3	0.35	0.38	0.24
CAP-150-013	AGG LowE Prime 6/12/6	3.3	0.31	0.35	0.24
CAP-150-023	AGG LowE Plus 6/12/6	3.2	0.33	0.41	0.24
CAP-150-031	AGG LowE Max 6/12/6	3.1	0.17	0.33	0.24

Note: Ratings indicated are based on standard WERS awning rating sizes. View full list of Residential and Commercial WERS ratings at capral.com.au

FUTURELINE HINGED DOOR



The Futureline Hinged Door system integrates seamlessly into the Futureline 425TB and 429TB framing systems to provide a high quality, thermally broken hinged door option. The 46mm door panel has been designed with clean, flat faces and a choice of standard or tall door rail options for added design flexibility and finished with high quality hardware. Midrails are also available to create a segmented look or to align with adjacent transoms.

The door panel profiles incorporate the latest thermal break technology consisting of double bar polyamide strips for excellent levels of thermal insulation while a selection of glazing bead options accommodate double glazing up to a width of 32mm.

FEATURES AND BENEFITS

- Excellent 'Uw' values down to 2.5
- Industry standard 46mm door panel profile
- Two rail and midrail (standard and tall) options
- High quality hardware including thermally isolated hinges, heavy duty corner spigots and optional multi-point locks.
- Capable of accommodating IGU's up to 32mm

MAXIMUM PERFORMANCE

Serviceability Pressure	1500Pa
Ultimate Pressure	2500Pa
Water Penetration	600Pa

FRAME SIZE

Rail Depth	46mm
Rail Height	89 or 120mm

MAXIMUM RECOMMENDED SIZE

Panel Height	2700mm
Panel Width	1000mm
Panel Weight	115kg

GLAZING CAPACITY

Double Glazed	19 - 32mm
---------------	-----------

ACOUSTICS (MAX)

Rw (C;Ctr)	36 (-2;-2)
------------	------------

WERS WINDOW ENERGY RATINGS

Window ID Glazing Uw SHGC Tw Air Inf

Futureline Hinged Door into 425TB

CAP-115-001	6Clr/12/6Clr	3.3	0.48	0.51	0.27
CAP-115-004	6ET/12Ar/6Clr	2.7	0.42	0.47	0.27
CAP-115-042	AGG LowE Prime 6/12/6	2.7	0.37	0.43	0.27
CAP-115-052	AGG LowE Plus 6/12/6	2.6	0.40	0.51	0.27
CAP-115-060	AGG LowE Max 6/12/6	2.5	0.20	0.41	0.27

Futureline Hinged Door into 429TB

CAP-149-001	6Clr/12/6Clr	3.5	0.45	0.47	0.27
CAP-149-004	6ET/12Ar/6Clr	3.0	0.39	0.44	0.27
CAP-149-012	AGG LowE Prime 6/12/6	3.0	0.34	0.40	0.27
CAP-149-022	AGG LowE Plus 6/12/6	2.9	0.37	0.47	0.27
CAP-149-030	AGG LowE Max 6/12/6	2.8	0.19	0.38	0.27

View full list of Residential and Commercial WERs ratings at capral.com.au





FUTURELINE 425TB FRAMING SYSTEM



The Capral Futureline 425TB centre glazed framing system incorporates the glazing capacity to accommodate high performance double glazed units up to 34mm while retaining crisp, clean profiles typically associated with commercial glazing systems.

The use of the latest thermal break technology, consisting of double bar polyamide strips has been incorporated for excellent levels of thermal insulation. The Futureline 425TB framing system offers the best of both worlds; a strong architectural aesthetic with a level of thermal efficiency usually associated with narrower, less substantial framing systems.

FEATURES AND BENEFITS

- Centre glazed
- Excellent 'Uw' values down to 1.7
- 100mm x 62mm Centre Glazed Framing System
- Crisp, clean square profiles
- Capable of accommodating IGU's up to 34mm
- Thermally broken Sub Frames
- High Performance Glazing Bead System
- Trickle Vent available
- Low profile sill

MAXIMUM PERFORMANCE

Serviceability Pressure	4500Pa
Ultimate Pressure	8,500Pa
Water Penetration	900Pa

FRAME SIZE

Depth	100mm
Height	62mm

MAXIMUM RECOMMENDED SIZE

Mullion Height	4000mm
Mullion Spacing	2400mm
Transom Width	3000mm

GLAZING CAPACITY

Double Glazed	22 - 34mm
---------------	-----------

ACOUSTICS (MAX)

Rw (C;Ctr)	41 (-2;-5)
------------	------------

BUSHFIRE RATING

BAL	40
-----	----

WERS WINDOW ENERGY RATINGS

Window ID	Glazing	Uw	SHGC	Tw	Air Inf
CAP-113-001	6Clr/12/6Clr	2.8	0.63	0.7	0.05
CAP-113-002	6Clr/12Ar/6Clr	2.7	0.64	0.7	0.05
CAP-113-004	6ET/12Ar/6Clr	2.0	0.55	0.64	0.05
CAP-113-006	6.38ClrLam/12/6Clr	2.8	0.61	0.7	0.05
CAP-113-007	6.38ClrLam/12Ar/6Clr	2.7	0.61	0.7	0.05
CAP-113-008	6.38CPClr/12/6Clr	2.2	0.54	0.65	0.05
CAP-113-009	6.38CPClr/12Ar/6Clr	2.0	0.54	0.65	0.05
CAP-113-052	AGG Prime Clr 6/12/6	2.0	0.48	0.6	0.05
CAP-113-062	AGG Plus Clr 6/12/6	1.8	0.52	0.7	0.05
CAP-113-070	AGG Max Clr 6/12/6	1.7	0.25	0.57	0.05

View full list of Residential and Commercial WERs ratings at capral.com.au

FUTURELINE 429TB 100mm FRAMING SYSTEM

The Capral Futureline 429TB front glazed framing system incorporates the glazing capacity to accommodate high performance double glazed units up to 34mm while retaining crisp, clean profiles typically associated with commercial glazing systems.

The use of the latest thermal break technology, consisting of double bar polyamide strips has been incorporated for excellent levels of thermal insulation. Mullions and transoms have been designed to accommodate common modular construction methods, allowing it to be fabricated in a similar manner to non-thermally broken framing systems.

FEATURES AND BENEFITS

- Excellent 'Uw' values down to 1.8
- 100mm x 62mm Front Glazed Framing System
- Crisp, clean square profiles
- Capable of accommodating IGU's up to 34mm
- Thermally broken Sub Frames
- High Performance Glazing Bead System
- Trickle Vent available
- Ability to be internally or externally glazed
- Reverse installation is possible

MAXIMUM PERFORMANCE

Serviceability Pressure	4500Pa
Ultimate Pressure	10,000Pa
Water Penetration	900Pa

FRAME SIZE

Depth	100mm
Height	62mm

MAXIMUM RECOMMENDED SIZE

Mullion Height	4800mm
Mullion Spacing	2400mm
Transom Width	3000mm

GLAZING CAPACITY

Double Glazed	22 - 34mm
---------------	-----------

ACOUSTICS (MAX)

Rw (C;Ctr)	41 (-1;-5)
------------	------------

BUSHFIRE RATING

BAL	40
-----	----

WINDOW ENERGY RATINGS

Window ID	Glazing	Uw	SHGC	Tw	Air Inf
CAP-158-001	6Clr/12/6Clr	2.9	0.62	0.67	0.33
CAP-158-002	6Clr/12Ar/6Clr	2.8	0.62	0.67	0.33
CAP-158-006	6ET/12Ar/6Clr	2.1	0.54	0.62	0.33
CAP-158-007	6.38ClrLam/12/6Clr	2.9	0.60	0.68	0.33
CAP-158-008	6.38ClrLam/12Ar/6Clr	2.8	0.60	0.68	0.33
CAP-158-009	6.38CPClr/12/6Clr	2.3	0.53	0.63	0.33
CAP-158-010	6.38CPClr/12Ar/6Clr	2.1	0.53	0.63	0.33
CAP-158-016	AGG Prime Clr 6/12/6	2.1	0.47	0.58	0.33
CAP-158-026	AGG Plus Clr 6/12/6	1.9	0.51	0.68	0.33
CAP-158-034	AGG Max Clr 6/12/6	1.8	0.24	0.55	0.33



View full list of Residential and Commercial WERs ratings at capral.com.au





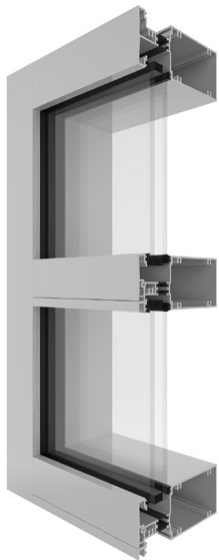
FUTURELINE 629TB 150mm FRAMING SYSTEM

The Capral Futureline 629TB front glazed framing system incorporates the glazing capacity to accommodate high performance double glazed units up to 34mm while retaining crisp, clean profiles typically associated with commercial glazing systems.

The use of the latest thermal break technology, consisting of double bar polyamide strips has been incorporated for excellent levels of thermal insulation. Mullions and transoms have been designed to accommodate common modular construction methods, allowing it to be fabricated in a similar manner to non-thermally broken framing systems.

FEATURES AND BENEFITS

- Front glazed
- Excellent 'Uw' values down to 1.9
- 150mm x 62mm Front Glazed Framing System
- Crisp, clean square profiles
- Modular frame construction
- Thermally broken sub frames
- Capable of accommodating IGU's up to 34mm
- Trickle Vent available
- Ability to be internally or externally glazed
- Reverse installation is possible



MAXIMUM PERFORMANCE

Serviceability Pressure	4500Pa
Ultimate Pressure	12,500Pa
Water Penetration	900Pa

FRAME SIZE

Depth	150mm
Height	62mm

MAXIMUM RECOMMENDED SIZE

Mullion Height	5400mm
Mullion Spacing	2400mm
Transom Width	3000mm

GLAZING CAPACITY

Double Glazed	22 - 34mm
---------------	-----------

ACOUSTICS (MAX)

Rw (C;Ctr)	41 (-1;-5)
------------	------------

WINDOW ENERGY RATINGS

Window ID	Glazing	Uw	SHGC	Tw	Air Inf
CAP-141-001	6Clr/12/6Clr	3.0	0.62	0.67	0.17
CAP-141-002	6Clr/12Ar/6Clr	2.9	0.62	0.67	0.17
CAP-141-006	6ET/12Ar/6Clr	2.1	0.54	0.62	0.17
CAP-141-007	6.38Clr/12/6Clr	3.0	0.60	0.68	0.17
CAP-141-008	6.38Clr/12Ar/6Clr	2.8	0.60	0.68	0.17
CAP-141-009	6.38CPClr/12/6Clr	2.3	0.53	0.63	0.17
CAP-141-010	6.38CPClr/12Ar/6Clr	2.1	0.53	0.63	0.17
CAP-141-025	AGG Prime Clr 6/12/6	2.2	0.47	0.58	0.17
CAP-141-035	AGG Plus Clr 6/12/6	1.9	0.51	0.68	0.17
CAP-141-043	AGG Max Clr 6/12/6	1.9	0.24	0.55	0.17

View full list of Residential and Commercial WERs ratings at capral.com.au

FUTURELINE 1029TB 250mm FRAMING SYSTEM

The Capral Futureline 1029TB framing system is designed to support high performance double glazed units up to 34mm thick while maintaining the sleek, precise profiles commonly found in commercial glazing systems.

It integrates thermal break technology, featuring double-bar polyamide strips, to maximise its thermal insulation capabilities. Additionally, its mullions and transoms are engineered to facilitate standard modular construction techniques, enabling fabrication processes akin to non-thermally broken framing systems.

FEATURES AND BENEFITS

- Front glazed
- Excellent 'Uw' values down to 2.1
- 250mm x 62mm Front Glazed Framing System
- Crisp, clean square profiles
- Modular frame construction
- Thermally broken sub-sill frames
- Capable of accommodating IGU's up to 34mm
- Ability to be internally or externally glazed
- Reverse installation is possible



MAXIMUM PERFORMANCE

Serviceability Pressure	4500Pa
Ultimate Pressure	9,000Pa
Water Penetration	900Pa

FRAME SIZE

Depth	250mm
Height	62mm

MAXIMUM RECOMMENDED SIZE

Mullion Height	6000mm
Mullion Spacing	2400mm
Transom Width	3000mm

GLAZING CAPACITY

Double Glazed	22 - 34mm
---------------	-----------

ACOUSTICS (MAX)

Rw (C;Ctr)	41 (-1;-5)*
------------	-------------

WINDOW ENERGY RATINGS

Window ID	Glazing	Uw	SHGC	Tw	Air Inf
CAP-583-001	6Clr/12/6Clr	3.1	0.62	0.67	0
CAP-583-002	6Clr/12Ar/6Clr	3.0	0.62	0.67	0
CAP-583-003	6ET/12Ar/6Clr	2.3	0.54	0.62	0
CAP-583-004	6.38CPClr/12/6Clr	2.5	0.52	0.63	0
CAP-583-005	6.38Clr/12/6Clr	3.1	0.58	0.67	0
CAP-583-006	AGG PRIME CLR 8/12/8	2.3	0.46	0.57	0
CAP-583-007	AGG PLUS CLR 8/12/8	2.1	0.50	0.67	0
CAP-583-008	AGG Max CLR 6/12/6	2.1	0.24	0.56	0

View full list of Residential and Commercial WERs ratings at capral.com.au

* Acoustic results based on 629TB system





CAPRAL HARDWARE

Designed to complement the Capral Futureline, Urban Plus, Urban and Artisan range of windows and doors, Caprio and Caprice by Capral are a contemporary range of hardware for windows and doors. The ranges are ideal for residential applications and deliver a stylish, consistent and cost-effective solution for windows and doors throughout a home.



CAPRIO HARDWARE RANGE

Caprio by Capral is a stylish, sleek range of contemporary hardware for windows and doors. This unique range is available in flat black, satin nickel and stainless-steel delivering a timeless and premium finish suitable for a variety of applications and environments. The Caprio range ensures exceptional durability without compromising on style.

Hinged Door Lever Set



Bi-Fold Actuator



Magnetic Lever Furniture



D'pull Handle



Flush Pull



Mortice Lock





CAPRICE HARDWARE RANGE

Designed to complement the Capral Futureline, Urban, Urban Plus and Artisan range of windows and doors, Caprice by Capral is a contemporary range of window and door hardware. Available in durable powder coat finishes, the range is ideal for residential applications delivering a consistent, stylish, cost-effective solution for all windows and doors throughout a home.

Single Point Sliding Door Lock



Twin Point Sliding Door Lock



Flush Pull Handle



Flush Mortise Sliding Door Lock



D'Pull Handle



Hinged Door Handles



Bi-Fold Hardware



Sliding Window Mortise Lock



Surface Mounted Sliding Window Lock



Single Chain Winder



Dual Winder



High Performance Dual Chain Winder



CAPRAL WINDOW AND DOOR SOLUTIONS

In addition to Futureline, Capral offers a selection of window and door ranges to suit your performance, style and budget requirements. Find out more about Capral windows and doors.



The Urban series is a standard range of energy efficient window and doors designed to inspire your living space.

Uncompromising in design, our Urban products are engineered with superior mechanisms and components for effortless, trouble-free operation.

All Urban windows and doors are designed to contribute to increased energy performance in your home.



The Urban Plus Designer Residential range is a collection of high-performance, energy efficient window and door systems designed to inspire your living space.

Uncompromising in design, the Urban Plus Designer Residential range is engineered with superior mechanisms and components for effortless, trouble-free operation.



Artisan Architectural products move and feel like no other, smooth and responsive. Featuring slim lines, various sill options and panel configurations, Artisan is a suitable option for both the high demands of commercial and residential applications. Artisan looks good in either a traditional or contemporary décor, making it the ideal choice for homeowners, builders, designers and architects alike.



The AGS Commercial range is designed to achieve the ultimate combination of architectural style and performance. Each door and window is engineered to withstand Australia's harsh conditions, even the extremes. In fact, they're recognised as some of the best performing windows and doors on the market. All tested for heavy use commercial and residential applications.

