

GARDENEDGE



CAPRAL
ALUMINIUM



GardenEdge

Aluminium Garden Edging

Strong and durable yet flexible enough to allow you to create any shape you want.

GardenEdge is a simple system to create borders for easily separating lawn from garden beds.

Other systems on the market can be complicated and expensive, requiring various joiners and fiddly hardware to get the job done. They are often made with rounded lips that work against the clean straight edge that many modern landscapers are looking for.

GardenEdge is minimal by comparison – all you need are our edging strips and pegs!

The edging strips bend easily to form smooth, graceful curves that look beautiful and stop the spread of grass roots. They work best on fairly even terrain - if you have a lot of dips and rises, a paver border is easier.

You can order your edging strips pre-cut to whatever sizes you require or you can trim them yourself on site. Aluminium is an extremely effective metal for garden edging because it is very light and doesn't rust, fade, or rot. It can be cut-to-size with an angle grinder on site as needed.

GardenEdge gives you a professional look without the heavy lifting. If you need garden edging, Capral Can Do.

EASY INSTALLATION

Simply replace wood planks with aluminium extrusion.

LASTS FOREVER

No fading, no rust, no rot.

CUT TO SIZE

Can be supplied trimmed to your specifications.

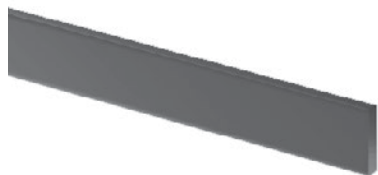
SLIM LINE

Square modern look for a clean straight edge.

ECONOMICAL

Low cost solution whether you buy it in bulk or not.

The System



Edging

MILL FINISH

- 80 x 3mm
- 100 x 3mm
- 125 x 3mm

WOODLAND GREY

- 80 x 3mm
- 100 x 3mm

MONUMENT GREY

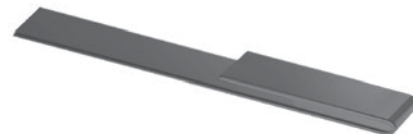
- 80 x 3mm
- 100 x 3mm



Fixing Pegs

Available in:

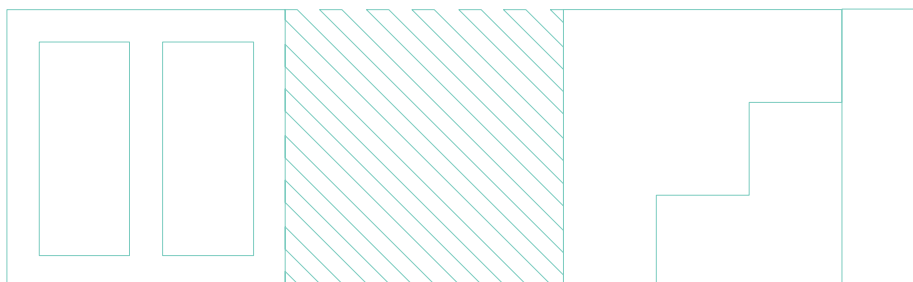
- Mill Finish
- Woodland Grey
- Monument Grey



Joiner Pegs

Available in:

- Mill Finish
- Woodland Grey
- Monument Grey





Installation Guide

1. Remove any existing garden edging.
2. Plan out your design.
3. Cut a clean furrow into the ground with a square spade.
4. Place one piece of edging into the furrow to gauge the finished height, adjusting the depth as necessary.
5. Lay the edging tightly against the furrow and use the GardenEdge pegs to keep it in place. Knock the peg into the ground with the hook hanging over the edging strip then drive into the ground with a hammer.
6. Use the wider joiner pegs to overlap strips.
7. Make corners by cutting to size and butting the edges together.

TIPS

- To make smooth curves, bend the edging around a circular form.
- We recommend putting the top edge about 12 mm above the soil level to maintain lawn/garden separation and keep roots from crossing over the top. This height makes the border almost invisible and allows you to mow right over the top.
- Be aware that the thin top edge can hurt bare feet.
- After cutting the edging, make sure you round off any sharp edges with a file.



FOR MORE INFORMATION & ORDERING:
1800 ALUMINIUM | [capral.com.au](https://www.capral.com.au)

CAPRAL
ALUMINIUM