



CAPRAL
ALUMINIUM

**Choose Capral for
Brisbane 2032**

Contents

- 4 Why Choose Capral**
 - 5 Australian Owned and Operated for 90 Years
 - 5 Australian Made Extrusions
 - 6 ASI Certification
 - 7 Lower Embodied Carbon Aluminium
 - 7 Environmental Product Declaration (EPD)
 - 7 Declare Labels – Healthy Materials
 - 9 Fabricator Network
 - 9 Tested Range
 - 9 Specification and Technical Support

11 Explore Our Aluminium Range

- 13 Centre Glazed Framing
- 15 Flush Glazed Framing
- 17 Acoustic Framing
- 19 Curtain Wall
- 21 Doors
- 23 Windows
- 25 Thermal Break
- 26 All Things Aluminium



Why Choose Capral

The Brisbane 2032 Olympic and Paralympic Games represent one of the most significant infrastructure programs in Australia's history, with major investment flowing into venues, transport, and public realm projects across Queensland. For architects, this is a rare opportunity to help shape facilities that will operate at an international standard while leaving a lasting legacy for decades to come.

As Australia's largest manufacturer and distributor of aluminium, Capral offers the scale, capability, and local support required to deliver with confidence on Olympic-scale projects. Capral products are designed, tested, and extruded in Australia, providing architects with high-performance solutions. Our systems are extruded from LocAl® lower carbon aluminium and carry Declare Labels, Australian Made and ASI Certifications. With integrated support from design through to delivery, Capral helps support successful project outcomes.





Australian Owned and Operated for 90 Years

In 2026, Capral proudly celebrates 90 years of operation, marking a milestone that reflects its long-standing and evolving role in Australia’s industrial development.

Over the decades, Capral aluminium has contributed to major buildings and architectural projects nationwide, supported the growth of aluminium in transport, and played a role in significant energy and infrastructure development across Australia.

Today, Capral operates a national network of extrusion plants, finishing facilities, and distribution centres supporting projects of all scales across the country. Aluminium has been fundamental to Australia’s built environment and remains central to its future.

As Australia invests in the Brisbane 2032 Olympic and Paralympic Games, Capral continues to support local manufacturing and innovation to help deliver infrastructure that will be used well beyond the Games.



Australian Made Extrusions



Capral is proud to be part of the Australian Made campaign, reinforcing its commitment to local manufacturing and supply. As Australia’s largest locally owned aluminium extruder, Capral supplies high-quality Australian-made windows, doors and framing systems.

By choosing Australian-made extruded aluminium from Capral, architects and project teams benefit from reliable local production that reduces reliance on imports and improves lead times and project efficiency.

This commitment also supports local industry through skilled Australian manufacturing jobs, while contributing to a more sustainable aluminium supply chain through lower-carbon production options and responsible manufacturing practices.



ASI Certification

The Aluminium Stewardship Initiative (ASI) is a global, not-for-profit standards and certification body that brings together producers, users, and stakeholders across the aluminium value chain to improve environmental and social performance and maximise aluminium's contribution to a sustainable society.

Capral is the only Australian extruder certified against both the ASI Performance Standard V3 and Chain of Custody (CoC) Standard V2.

For architects, specifying ASI-certified aluminium provides assurance of responsible sourcing and responsible production, and can contribute toward achieving Green Star ratings under the Green Building Council of Australia (GBCA) framework. For Olympic-scale projects, ASI-certified aluminium can support sustainability objectives and provide a valuable specification advantage.



Lower Embodied Carbon Aluminium

LocAl® is a locally extruded, lower-carbon aluminium option available across Capral's aluminium extrusion range. By specifying lower-carbon aluminium, CO₂e emissions can be significantly reduced across venues, buildings, and infrastructure for the Olympic Games.

LocAl® is available in two options using certified lower-carbon primary billet:

- ▶ **LocAL Green** – up to 12kg CO₂e per 1kg aluminium
- ▶ **LocAL Super Green** – up to 4kg CO₂e per 1kg aluminium

All LocAl® primary aluminium is sourced from ASI-certified smelters with full Chain of Custody traceability.

For architects, LocAl® provides a clear pathway to reduce embodied carbon and strengthen sustainability outcomes in project specification, including support for Green Star and broader decarbonisation targets.



Environmental Product Declaration (EPD)

Capral's LocAl® lower-carbon aluminium extrusions are supported by independently verified EPDs, providing transparent environmental data to support informed specification decisions.

This helps architects better understand embodied carbon impacts and supports sustainability reporting requirements across major infrastructure projects such as the Brisbane 2032 Olympic and Paralympic Games.

The EPD is available here: <https://epd-australasia.com/company-epd/capral-aluminium/>



Declare Labels – Healthy Materials

Capral's aluminium windows, doors, and systems are supported by Declare Labels, providing clear and transparent product information in an easy-to-read format. These labels disclose key details including material content, final assembly locations, life expectancy, end-of-life options, and compliance with relevant requirements of the Living Building Challenge.

For architects, this transparency supports informed specification decisions by clearly identifying product information and demonstrating compliance across Capral systems, helping support healthier and more responsible building outcomes. For the Brisbane 2032 Olympic and Paralympic Games, this level of clarity supports confident specification of products that meet sustainability expectations.





Fabricator Network

Capral's national fabricator network connects architects with true experts in their craft, supporting the delivery and installation of systems across projects nationwide. Many of these fabricators have long-standing partnerships with Capral, reflecting strong relationships built on experience and trust.

Capral can help connect you with the right fabricator to bring your project to life, including venues, buildings, and infrastructure for the Brisbane 2032 Olympic and Paralympic Games.

Tested Range

Capral maintains one of the most extensive testing portfolios in the aluminium industry, with windows, doors, and glazing systems tested to Australian Standards for performance and compliance.

A tested and compliant system provides architects with confidence when developing and presenting design proposals, supporting approval and specification processes.

Our Technology Solutions Group brings together industrial designers, engineers, draftspersons, and experienced fabricators to develop high-performing window and door systems for the built environment.

Supported by internal NATA-accredited testing facilities, Capral delivers code-compliant, energy-efficient, and sustainable system solutions. For the Brisbane 2032 Olympic and Paralympic Games, this capability supports the delivery of compliant, high-performance systems across complex venues, buildings, and infrastructure projects.

Specification and Technical Support

Our specification team are recognised industry experts in aluminium windows and doors, providing practical solutions to support project requirements across Australia. They assist with navigating complex standards, code compliance, site conditions, and budget considerations, helping simplify the specification process. A suite of technical resources is also available to support specification, including CAD and Revit files, technical manuals, samples, and test documentation.

For the Brisbane 2032 Olympic and Paralympic Games, our team can help navigate the complexities of major infrastructure delivery, supporting architects with practical guidance for specification across venues, buildings, and supporting infrastructure.

We are listed on the Brisbane 2032 Supplier Portal

The Brisbane 2032 Organising Committee has launched its Procurement Portal and ICN Gateway to connect major projects with capable Australian suppliers.

Capral is listed on the ICN Gateway, ensuring visibility as a trusted Australian aluminium supplier for Olympic-related projects. This makes it easier for project teams to identify and engage Capral early in the design and specification process.

Check out our listing for yourself:
<https://gateway.icn.org.au/suppliers>



Explore Our Aluminium Range

View Capral's aluminium solutions across a wide range of applications:

Centre Glazed Framing	11
Flush Glazed Framing	13
Acoustic Framing	15
Curtain Wall	17
Doors	19
Windows	21
Thermal Break	23
All Things Aluminum	24



Centre Glazed Framing



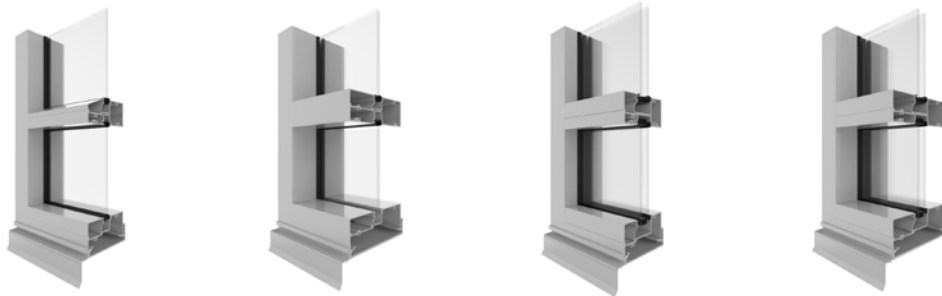
ACOUSTIC RATED

Declare[®] DECLARE LABELS

Capral’s AGS Narrowline centre-glazed framing systems are a trusted benchmark in Australian commercial and architectural construction, delivering a bold, modern aesthetic with exceptional structural performance.

Available in 101.6mm (400/425 series) and 150mm (600/625 series) frame depths, the range caters to both single-glazed (400, 600) and double-glazed (425, 625) applications for scalable thermal and acoustic performance to suit your project’s requirements.

With options for bevelled or square finishes and a wide suite of compatible windows and doors, the Narrowline range offers enormous design flexibility for commercial and residential projects alike. Extruded in Australia using Capral’s LocAl[®] Green primary aluminium, all four systems share a consistent architectural profile, making it straightforward to mix frame depths and glazing types across different elevations of the same project.



SINGLE GLAZED

DOUBLE GLAZED

AGS 400
Narrowline
101.6mm

AGS 600
Narrowline
150mm

AGS 425
Narrowline
101.6mm

AGS 625
Narrowline
150mm

MAX HEIGHT

4000mm

4400mm

4000mm

4400mm

MAX WIDTH

2400mm

2200mm

2400mm

2200mm

SLS

5200Pa

4500Pa

4500Pa

9300Pa

ULS

10300Pa

10900Pa

9700Pa

10600Pa

WATER

1500Pa

900Pa

1500Pa

1500Pa

UVALUE

4.07 - 6.03

4.39 - 6.29

2.29 - 5.77

2.56 - 5.79

SHGC

0.26 - 0.75

0.31 - 0.71

0.10 - 0.66

0.14 - 0.69

ACOUSTIC RATING

37(0;-3)

37(0;-3)

41(-2;-6)

41(-2;-6)





Flush Glazed Framing

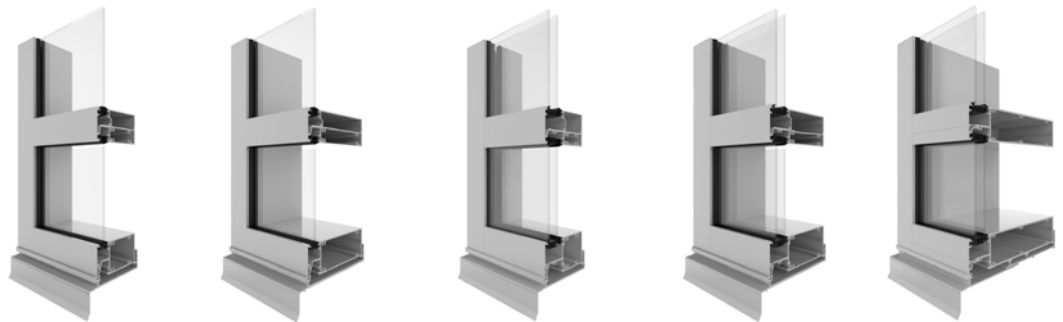


ACOUSTIC RATED

Declare[®] DECLARE LABELS

Capral's AGS Flushline range is a front-glazed commercial framing system designed to deliver a clean, contemporary aesthetic across a variety of architectural applications. The forward-positioned glazing pocket creates a flush external finish and a reverse installation option allows for expressed mullions, providing genuine flexibility in how a façade reads from the street. Each system accommodates both internal and external glazing techniques, and its front-glazed arrangement is designed to maximise internal areas whilst achieving a modern external appearance.

All systems are compatible with a broad suite of operable windows and doors, and can incorporate structurally glazed mullion profiles for a fully integrated, high-performance façade solution suited to commercial office buildings, multi-residential developments, and high-end architectural projects.



SINGLE GLAZED

DOUBLE GLAZED

	AGS 419 Flushline 100mm	AGS 619 Flushline 150mm	AGS 429 Flushline 100mm	AGS 629 Flushline 150mm	AGS 1029 Flushline 250mm
MAX HEIGHT	3800mm	5000mm	3800mm	5000mm	6000mm
MAX WIDTH	2400mm	2400mm	2400mm	2400mm	2400mm
SLS	6000Pa	5700Pa	6000Pa	4500Pa	4500Pa
ULS	9000Pa	11100Pa	10000Pa	15000Pa	10500Pa
WATER	1500Pa	1200Pa	900Pa	1200Pa	900Pa
UVALUE	3.97 - 6.28	4.11 - 6.32	2.6 - 3.5	2.5 - 6.25	3.17 - 6.79
SHGC	0.22 - 0.75	0.23 - 0.75	0.13 - 0.61	0.13 - 0.71	0.15 - 0.76
ACOUSTIC RATING	37(0;-2)	35(-1;-3)	40(-1;-6)	40(-2;-6)	39(-1;-4)





Acoustic Framing



ACOUSTIC RATED

Declare[®] DECLARE LABELS

Capral’s AGS 419/619 Flushline Acoustic framing systems are a specialised solution for projects where noise reduction is a primary design consideration. Developed to provide a product where acoustic performance is paramount, these systems accommodate two panes of glass separated by an acoustic gap of approximately 60mm and 100mm respectively, making them ideal for use where there are nearby airports, train stations, busy roads, or other noisy areas.

Acoustic framing can be used alongside the single and double-glazed 419 Flushline systems for a consistent external appearance, ensuring acoustic performance doesn’t come at the cost of architectural cohesion. The result is a system that delivers the same clean, flush façade aesthetic of the standard Flushline range, while providing a meaningful uplift in acoustic comfort for building occupants.



AGS 419
Flushline Acoustic
100mm



AGS 619
Flushline Acoustic
150mm

MAX HEIGHT	3200mm	4400mm
MAX WIDTH	2400mm	2400mm
SLS	4500Pa	4500Pa
ULS	7800Pa	11500Pa
WATER	900Pa	900Pa
UVALUE	2.5 - 3.1	2.5 - 3.2
SHGC	0.41 - 0.64	0.18 - 0.64
ACOUSTIC RATING	49(-3;-8)	50(-3;-8)



Curtain Wall



Capral’s CW116 and CW175 are structurally glazed curtain wall systems designed for small to mid-sized projects, both tested to the rigorous AS4284 standard. The structural glazed system gives the appearance of a frameless glass façade, with optional cover beads to add vertical or horizontal aluminium strips – offering a striking, modern aesthetic with design flexibility.

The CW116 is an economical four-sided structurally glazed system reaching up to 10 storeys in standard applications, while the CW175 offers higher structural performance, greater allowance for building and slab movement, and is targeted at projects where large expanses of glass or high wind loads are demanded. Both systems support double and single glazing, and integrate sun shading directly into the curtain wall without sacrificing structural or water performance.



CW116
Commercial 116mm
Curtain Wall



CW175
Commercial 175mm
Curtain Wall

MAX PANEL HEIGHT	4200mm	4500mm
MAX PANEL WIDTH	2300mm	1500mm
SLS	1600Pa	3000Pa
ULS	4500Pa	5000Pa
WATER	1200Pa	1800Pa
UVALUE	2.7 - 3.8	2.8 - 4.0
SHGC	0.22 - 0.65	0.19 - 0.67
ACOUSTIC RATING		42(-2;-5)



Doors



Capral's AGS 225, AGS 900, and Artisan 994TH sliding door systems cover the full spectrum of commercial and architectural door applications, from shopfronts and office entries through to premium residential projects.

The AGS 225 is a 46mm pocket-glazed commercial door panel designed with flexibility, performance, and ease of assembly in mind, available in both single and double-glazed configurations and compatible with the full range of Capral framing systems.

The AGS 900 is a high-performance system built for demanding structural requirements and larger openings, available in single and double glazed. The Artisan 994TH steps up the architectural quality, offering recessed, corner, and cavity configurations with top rolling hardware for smooth operation and a refined finish — ideal where design detail and indoor-outdoor flow matter most.



HINGED/PIVOT DOORS

SLIDING/STACKING DOORS

	AGS 225 Single Glazed	AGS 225 Double Glazed	AGS 900 Single Glazed	AGS 900 Double Glazed	Artisan 994TH Double Glazed
MAX HEIGHT	3000mm	3000mm	3000mm	3000mm	3000mm
MAX WIDTH	1500mm	1500mm	2500mm	2500mm	2250mm
SLS	4500Pa	4500Pa	6000Pa	6000Pa	1500Pa
ULS	10000Pa	10000Pa	10500Pa	10500Pa	3000Pa
WATER	900Pa	900Pa	700Pa	700Pa	300Pa
UVALUE	4.2 - 5.9	3.0 - 4.6	4.2 - 6.3	2.3 - 3.9	2.3 - 3.9
SHGC	0.16 - 0.54	0.13 - 0.47	0.20 - 0.66	0.12 - 0.60	0.12 - 0.60
ACOUSTIC RATING	35(0;-1)	35(-1;-3)	37(0;-3)	38(0;-3)	37(-1;-3)



Windows

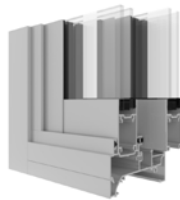


Declare **DECLARE LABELS**

Capral's AGS 950 Sliding Window, Artisan 992 Awning Window, AGS 499 Strut Window, and AGS Commercial Louvre are a diverse suite of operable window solutions, each designed to integrate seamlessly with Capral's broader range of commercial framing systems.

While each serves a distinct functional purpose – from high-performance sliding and weather-protected awning ventilation, through to server-style strut operation and adjustable louvre airflow – they share a common commitment to structural integrity, design flexibility, and compatibility across the AGS framing ecosystem. The AGS 950, for example, has been tested to cyclonic requirements and can accommodate large sash sizes and numerous configurations, while the Commercial Louvre delivers a high-performance louvre window with a clean architectural finish.

Together, they give specifiers a well-rounded toolkit for addressing ventilation, performance, and aesthetic requirements across commercial and architectural projects of varying scale and complexity.



AGS 950
Sliding Window

Artisan 992
Awning Window

AGS 499
Strut Window

AGS
Commercial Louvre

MAX HEIGHT

1800mm

2600mm

1500mm

2900mm

MAX WIDTH

1200mm

2600mm

2100mm

900mm

SLS

7000Pa

3000Pa

1000Pa

ULS

10000Pa

4500Pa

6000Pa

8000Pa

WATER

800Pa

900Pa

450Pa

250Pa

UVALUE

3.55 - 6.60

4.54 - 6.93

5.3 - 6.5

4.92 - 6.2

SHGC

0.17 - 0.65

0.33 - 0.51

0.33 - 0.52

0.30 - 0.51

ACOUSTIC RATING

36(-1;-3)

37(-1;-2)



Thermal Break



A thermal break is a high-density, low-conductivity material placed between the internal and external sections of an aluminum profile. This barrier significantly reduces the transfer of heat and cold through the frame, improving the overall insulation of the building envelope. By minimizing thermal bridging, these systems help maintain stable internal temperatures and reduce energy consumption associated with heating and cooling.

The Capral Futureline range utilizes advanced thermal break technology to provide high-performance framing solutions for large-scale structural projects. These systems are engineered to meet stringent energy requirements while supporting the substantial glazing weights and expansive spans common in modern architectural designs. By integrating seamlessly with broader framing suites, the Futureline range allows for a unified aesthetic that balances high-end design with superior thermal efficiency and long-term durability.

FRAMING



Futureline 425TB
Centre Glazed
100mm



Futureline 429TB
Centre Flush Glazed
100mm



Futureline 629TB
Centre Flush
150mm



Futureline 1029TB
Centre Flush
250mm

WINDOWS & DOORS



Futureline 997TB
Hinged Door



Futureline 994TB
Sliding Door



Futureline
Awning Window

All Things Aluminum

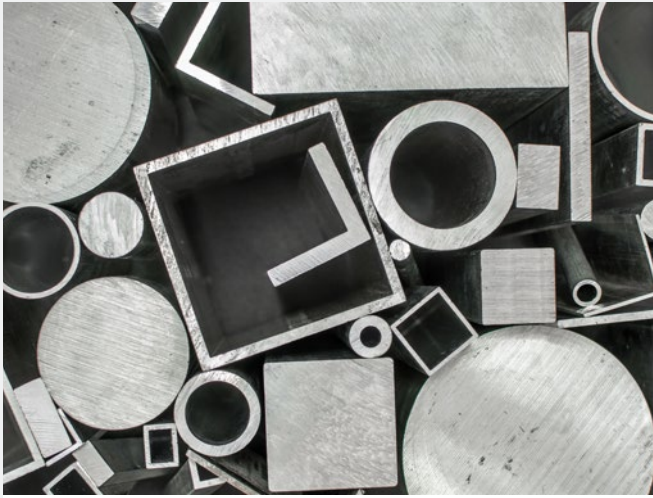
In addition to our windows and doors systems, Capral also offers a range of aluminium products across industrial applications. These solutions support a wide variety of fabrication and design needs.

While our offering is outlined below, our capability extends further. If it is made from aluminium, we can help connect you with the right product, system, or fabricator to support your project.



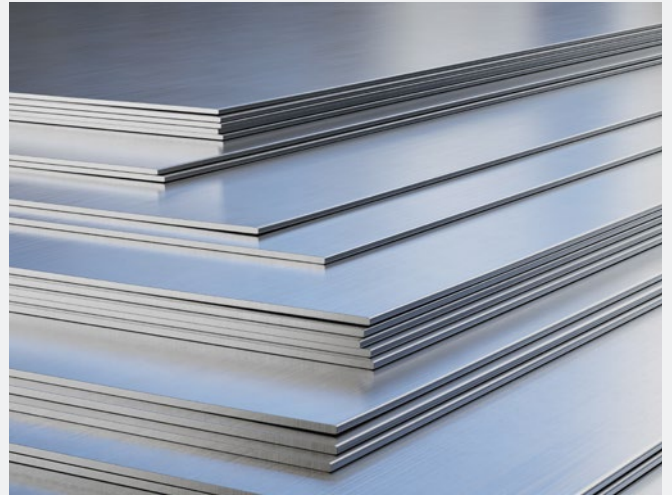
Amplimesh Security

Amplimesh is Capral's security brand, offering a range of tested aluminium security screens and doors that comply with relevant Australian Standards.



Geometric Shapes

Capral provides a range of aluminium geometric profiles and shapes that can be incorporated into bespoke architectural and structural designs.



Flat Sheet and Plate

Capral flat sheet and plate products are suitable for a wide range of fabrication and construction applications requiring strength, versatility, and durability.



Seating

Capral supplies aluminium seating solutions suitable for public realm and large-scale events, including applications for major infrastructure such as the Olympic Games.



Extruded Louvres

Capral extruded louvres are designed to support sun shading and natural ventilation, helping improve building performance and comfort.

CAPRAL ALUMINIUM

ABN 78 004 213 692
1800 ALUMINIUM (258 646)
capral.com.au

